

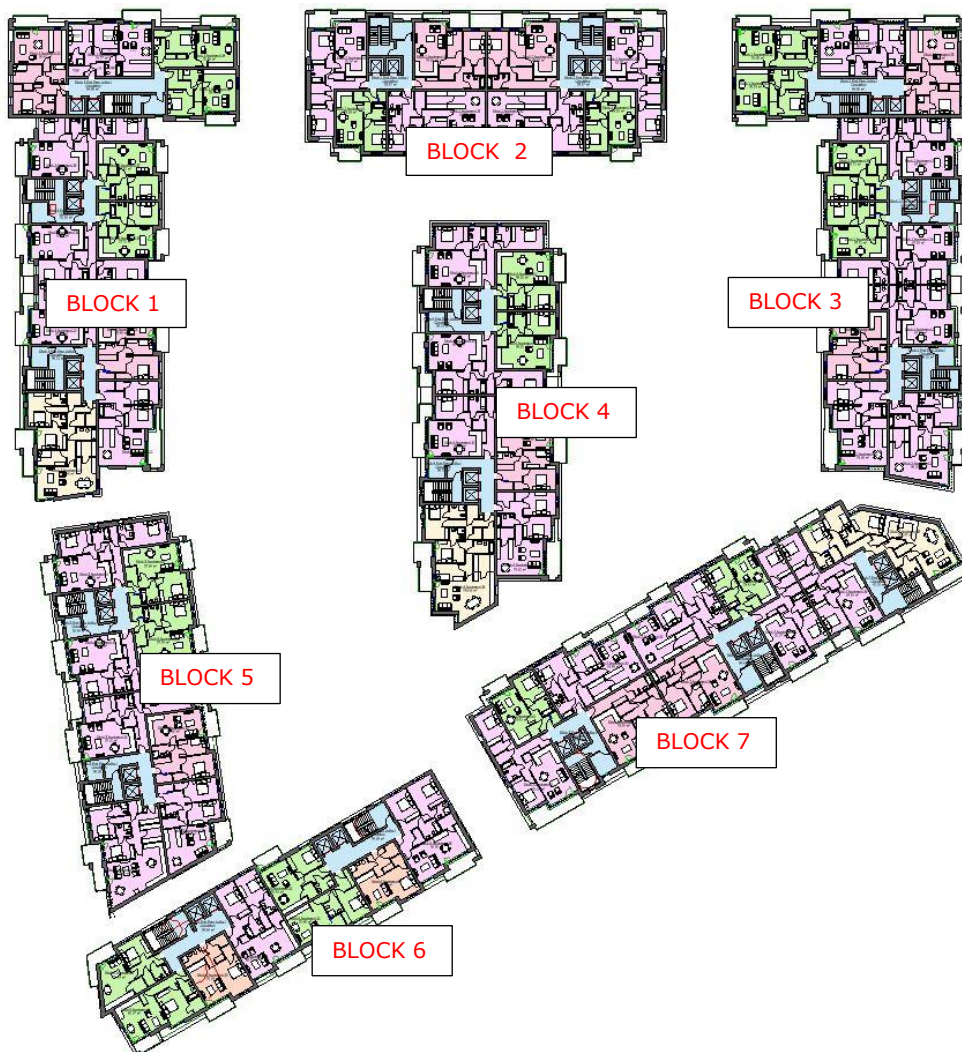
## APARTMENT TYPES; Sector 6a & 6b

Proposed Development :

Residential Development,  
Baldoye, Co. Dublin

Client :

Lismore Homes Developments



CCH Architects Limited  
Lacken House, Dublin Road, Kilkenny, R95 KF34

Telephone 056 776 1591

E-mail [info@cch-architects.com](mailto:info@cch-architects.com)

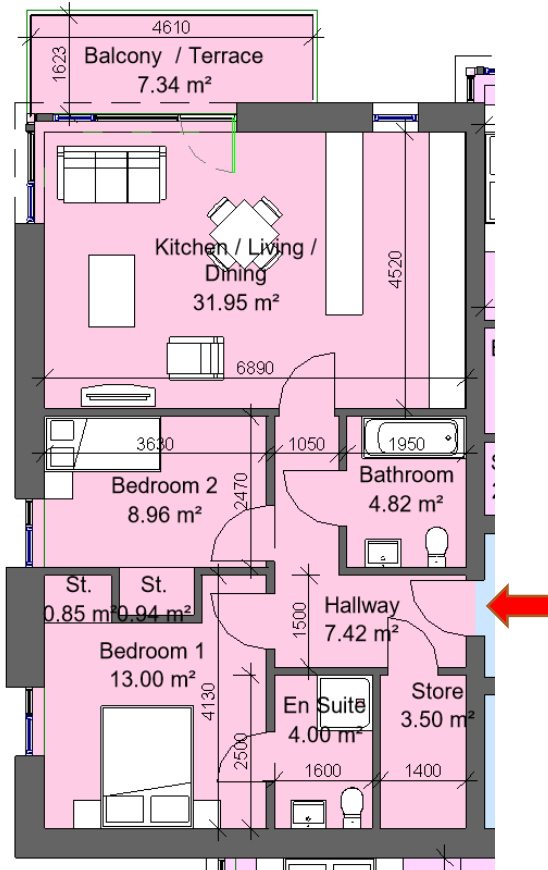
Regd Office: Lacken House, Dublin Road, Kilkenny, R95 KF34

Registration No. 514202

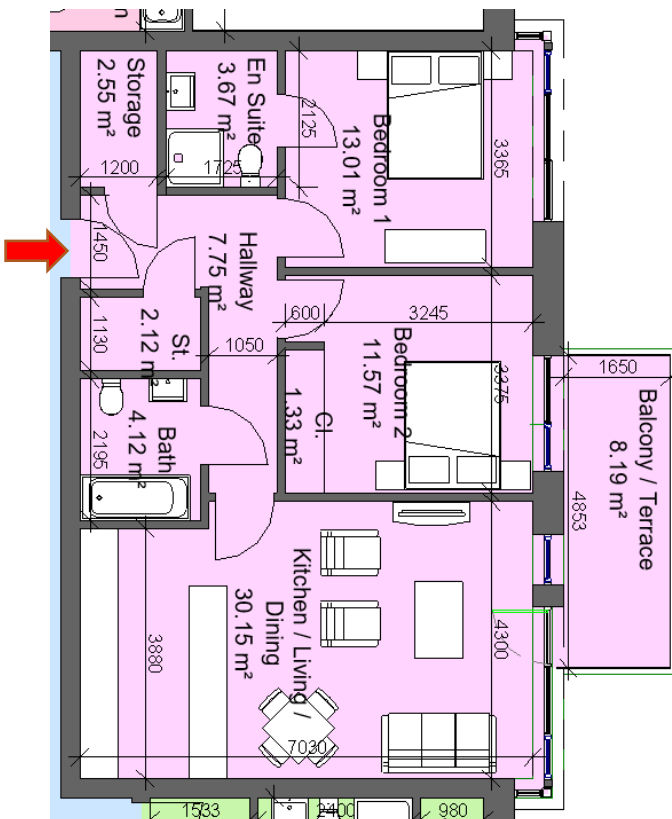
Managing Director ; Arthur Hickey, B.Arch, Dip.Arb, FRIAI, FMCI Arb  
Company Secretary: Lynda Hickey, MIA

VAT Registration No 3190919G



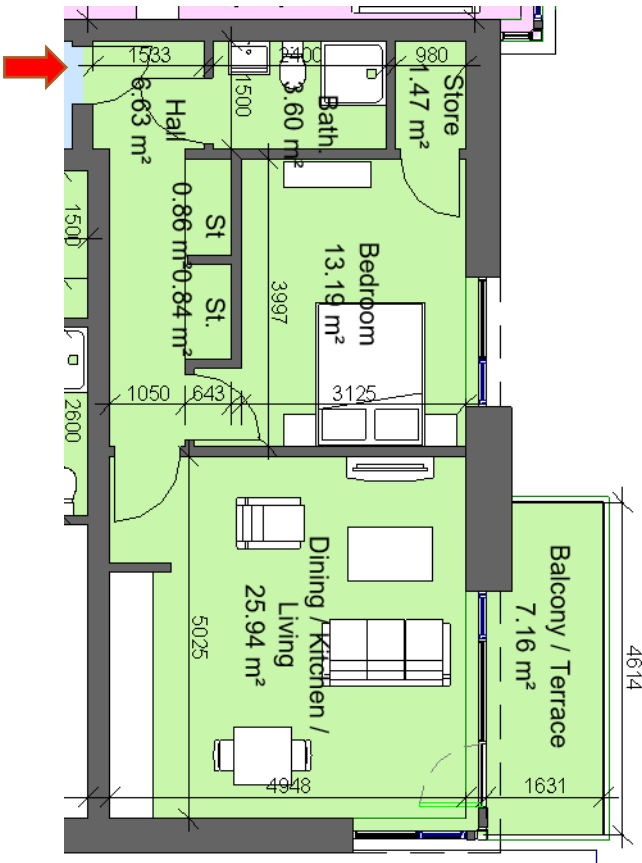


Sector 6a & 6b		
Block 1, Apartment 1, 12, 24, 36, 48 Block 3, Apartment 4, 15, 27, 39, 51, 63		
2 Bed 3 Person		
Total Area	Min. req. area	Proposed
Total Apartment Area	63sq.m	78.4sq.m
Total Kitchen / Living / Dining	28sq.m	31.9sq.m
Bedroom 1	13sq.m	13.sq.m
Bedroom 2	7.1sq.m	8.9sq.m
Agg. Bedroom Area	20.1sq.m	21.9sq.m
Agg. Storage	5sq.m	5.3sq.m
Private Open Space	6sq.m	7.34sq.m
Dual Aspect		YES
Floor area 10% greater than minimum floor area?		YES

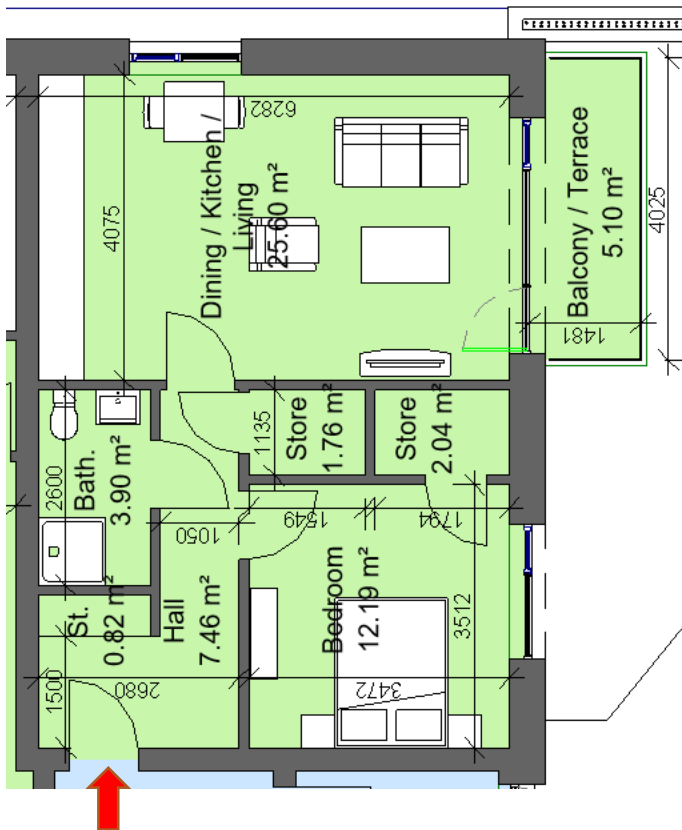


Sector 6a & 6b		
Block 1, Apartment 2, 13, 25, 37, 49 Block 3, Apartment 3, 14, 26, 38, 50, 62		
2 Bed 4 Person		
Total Area	Min. req. area	Proposed
Total Apartment Area	73sq.m	79.4sq.m
Total Kitchen / Living / Dining	30sq.m	31.9sq.m
Bedroom 1	13sq.m	13.1sq.m
Bedroom 2	11.4sq.m	11.6sq.m
Agg. Bedroom Area	24.4sq.m	24.7sq.m
Agg. Storage	6sq.m	6sq.m
Private Open Space	7sq.m	8.19sq.m
Dual Aspect		NO
Floor area 10% greater than minimum floor area?		NO

\*Some units are mirrored / handed  
 \*Refer to Housing Quality Statement for individual apartment floor area calculations

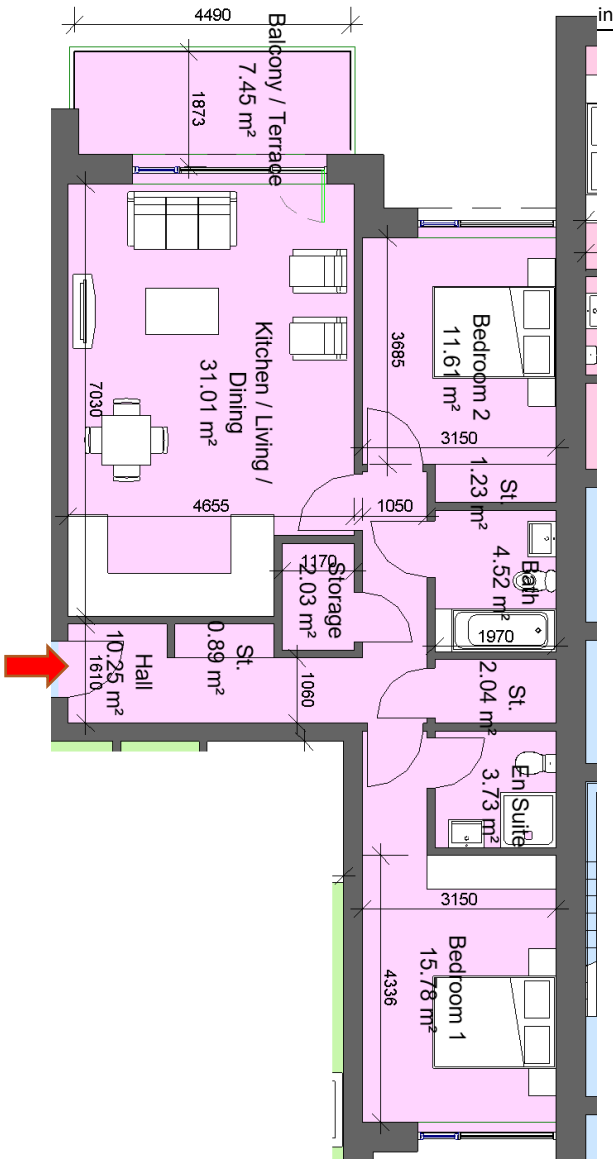


Sector 6a & 6b		
Block 1, Apartment 3, 14, 26, 38, 50 Block 3, Apartment 1, 12, 24, 36, 48, 60		
1 Bed 2 Person		
Total Area	Min. req. area	Proposed
Total Apartment Area	45sq.m	53.7sq.m
Total Kitchen / Living / Dining	23sq.m	25.9sq.m
Bedroom 1	11.4sq.m	13.2sq.m
Agg. Storage	3sq.m	3.2sq.m
Private Open Space	5sq.m	7.16sq.m
Dual Aspect		YES
Floor area 10% greater than minimum floor area?		YES

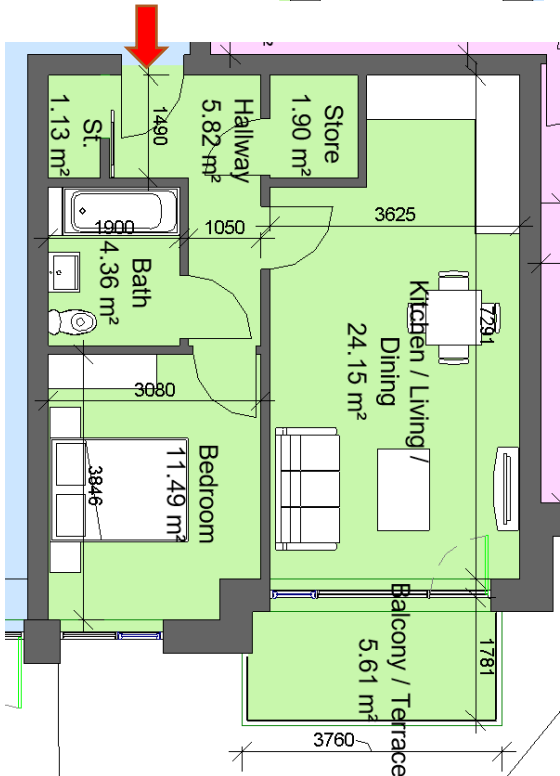


Sector 6a & 6b		
Block 1, Apartment 4, 15, 27, 39, 51 Block 3, Apartment 2, 13, 25, 37, 49, 61		
1 Bed 2 Person		
Total Area	Min. req. area	Proposed
Total Apartment Area	45sq.m	56.4sq.m
Total Kitchen / Living / Dining	23sq.m	25.6sq.m
Bedroom 1	11.4sq.m	12.2sq.m
Agg. Storage	3sq.m	4.6sq.m
Private Open Space	5sq.m	5.1sq.m
Dual Aspect		YES
Floor area 10% greater than minimum floor area?		YES

\*Some units are mirrored / handed  
\*Refer to Housing Quality Statement for individual apartment floor area calculations

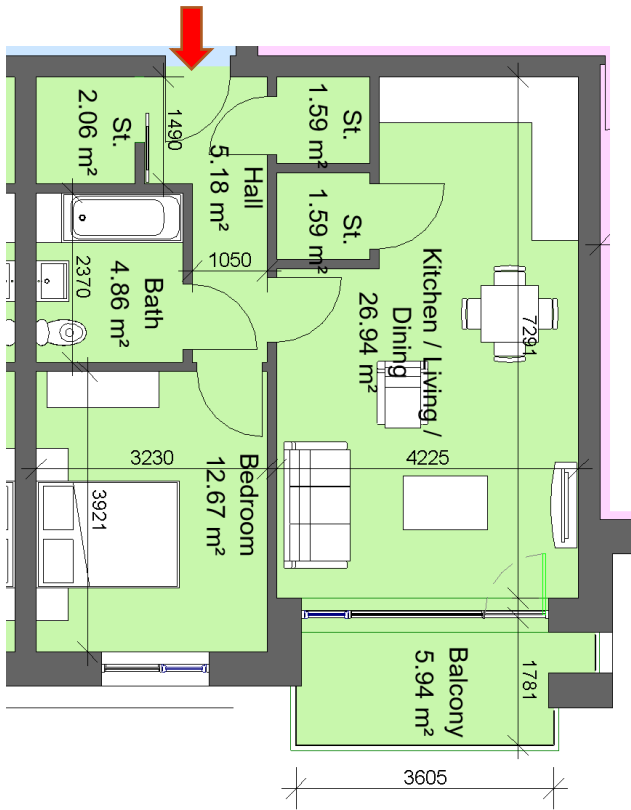


Sector 6a & 6b		
<b>Block 1, Apartment 5, 7, 9, 16, 18, 20, 28, 30, 32, 40, 42, 44, 52, 54, 56</b>		
<b>Block 3, Apartment 7, 9, 17, 19, 21, 29, 31, 33, 41, 43, 45, 53, 55, 57</b>		
<b>Block 4 Apartment 4, 5, 10, 12, 18, 20, 26, 28, 34, 36, 42, 44</b>		
<b>Block 5 Apartment 3, 5, 11, 12, 18, 20, 26, 28, 34, 36</b>		
2 Bed 4 Person		
Total Area	Min. req. area	Proposed
Total Apartment Area	73sq.m	87.2sq.m
Total Kitchen / Living / Dining	30sq.m	31sq.m
Bedroom 1	13sq.m	15.8sq.m
Bedroom 2	11.4sq.m	11.6sq.m
Agg. Bedroom Area	24.4sq.m	27.4sq.m
Agg. Storage	6sq.m	6.2sq.m
Private Open Space	7sq.m	7.45sq.m
Dual Aspect		YES
Floor area 10% greater than min. floor area?		YES

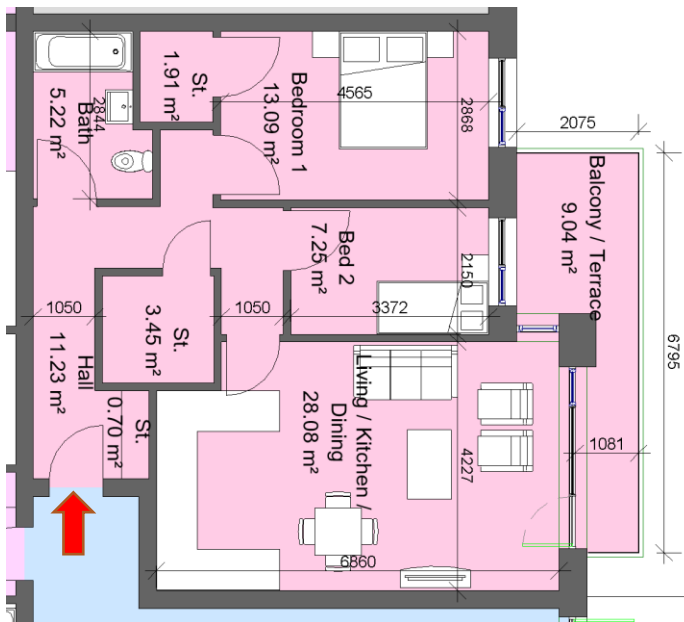


Sector 6a & 6b		
<b>Block 1, Apartment 6, 8</b>		
<b>Block 2, Apartment 2, 6, 8, 9, 14, 17, 22, 25, 30, 33, 38</b>		
<b>Block 3, Apartment 6</b>		
<b>Block 4, Apartment 2, 4</b>		
<b>Block 5, Apartment 2, 4</b>		
<b>Block 7, Apartment 2, 4</b>		
1 Bed 2 Person		
Total Area	Min. req. area	Proposed
Total Apartment Area	45sq.m	51.3sq.m
Total Kitchen / Living / Dining	23sq.m	24.1sq.m
Bedroom 1	11.4sq.m	11.5sq.m
Agg. Storage	3sq.m	3.2sq.m
Private Open Space	5sq.m	5.61sq.m
Dual Aspect		NO
Floor area 10% greater than min. floor area		YES

\*Some units are mirrored / handed  
 \*Refer to Housing Quality Statement for individual apartment floor area calculations

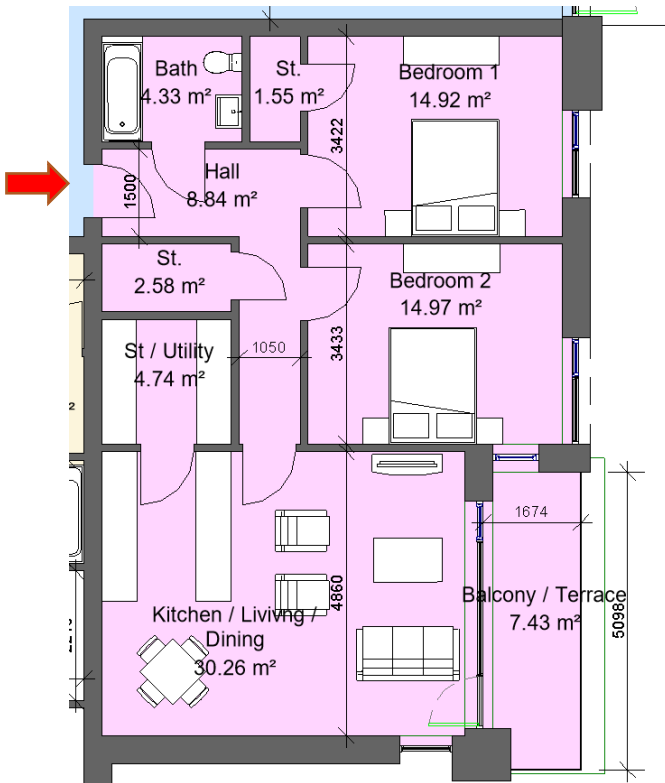


Sector 6a & 6b		
<b>Block 1, Apartment 17, 19, 29, 31, 41, 43, 53, 55</b>		
<b>Block 3, Apartment 16, 18, 28, 30, 40, 42, 52, 54</b>		
<b>Block 4, Apartment 9, 11, 17, 19, 25, 27, 33, 35, 41, 43</b>		
<b>Block 5, Apartment 9, 11, 17, 19, 25, 27, 33, 35</b>		
<b>Block 7, Apartment 9, 14, 19, 24, 34, 39, 44</b>		
1 Bed 2 Person		
Total Area	Min. req. area	Proposed
Total Apartment Area	45sq.m	57.7sq.m
Total Kitchen / Living / Dining	23sq.m	26.9sq.m
Bedroom 1	11.4sq.m	12.6sq.m
Agg. Storage	3sq.m	5.2sq.m
Private Open Space	5sq.m	5.94sq.m
Dual Aspect		NO
Floor area 10% greater than min. floor area?		YES

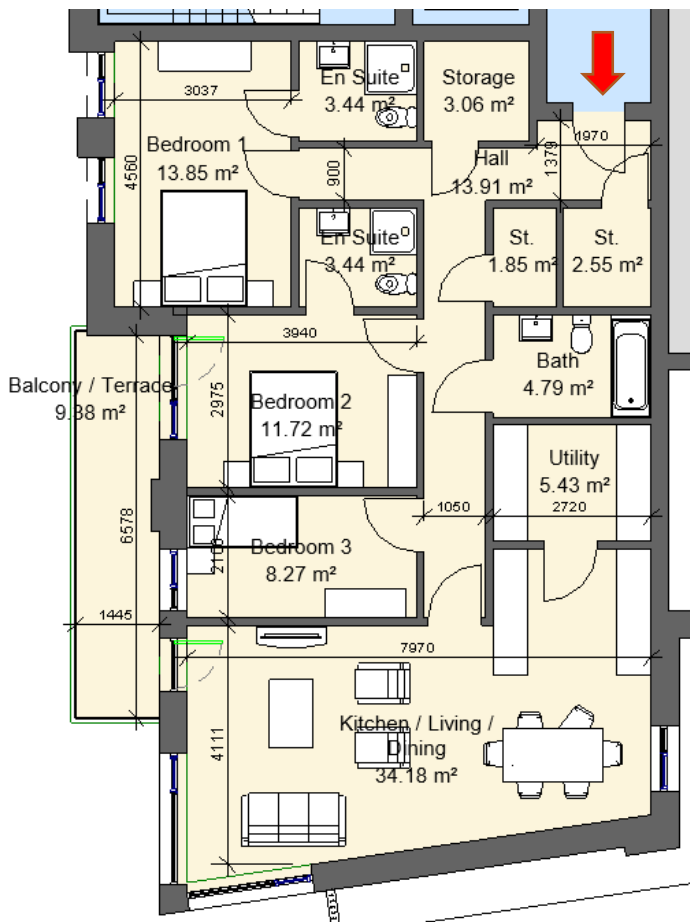


Sector 6a & 6b		
<b>Block 1, Apartment 21, 33, 24, 45, 57</b>		
<b>Block 2, Apartment 4, 10, 12, 18, 20, 26, 28, 34, 36</b>		
<b>Block 3, Apartment 20, 32, 44, 56</b>		
<b>Block 4, Apartment 13, 21, 29, 37, 45</b>		
<b>Block 5, Apartment 13, 21, 29, 37</b>		
2 Bed 3 Person		
Total Area	Min. req. area	Proposed
Total Apartment Area	63sq.m	69.5sq.m
Total Kitchen / Living / Dining	28sq.m	28.4sq.m
Bedroom 1	13sq.m	13.7sq.m
Bedroom 2	7.1sq.m	7.3sq.m
Agg. Bedroom Area	20.1sq.m	21sq.m
Agg. Storage	5sq.m	5.1sq.m
Private Open Space	6sq.m	9.04sq.m
Dual Aspect		NO
Floor area 10% greater than min. floor area?		YES

\*Some units are mirrored / handed  
 \*Refer to Housing Quality Statement for individual apartment floor area calculations

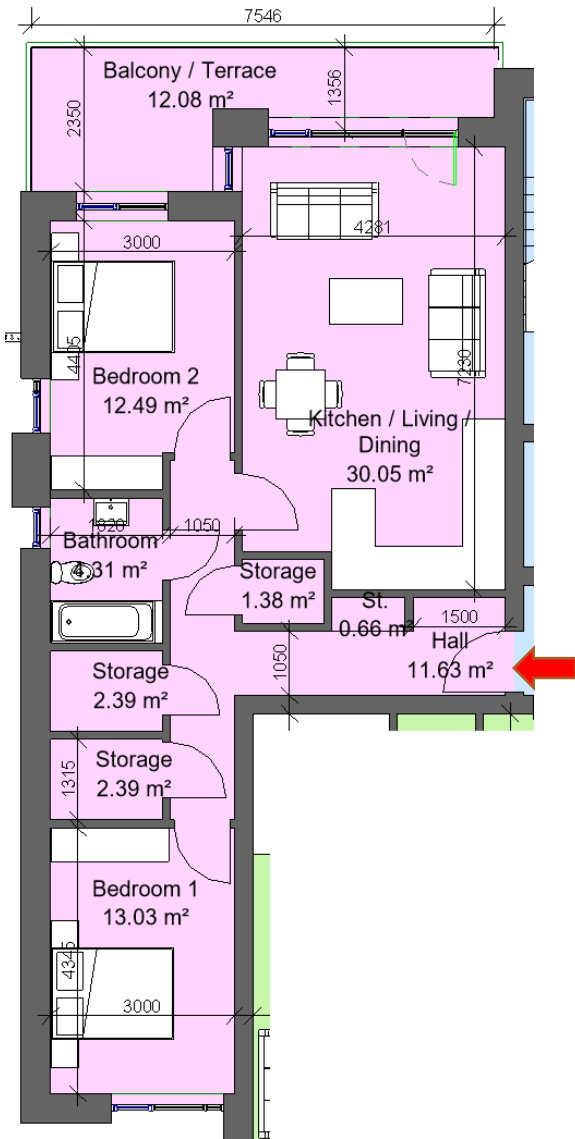


Sector 6a & 6b		
Block 1, Apartment 23, 35, 47, 59 Block 3, Apartment 22, 34, 46, 58 Block 4, Apartment 7, 15, 23, 31, 39, 47		
2 Bed 4 Person		
Total Area	Min. req. area	Proposed
Total Apartment Area	73sq.m	79.6sq.m
Total Kitchen / Living / Dining	30sq.m	30.2sq.m
Bedroom 1	13sq.m	14.9sq.m
Bedroom 2	11.4sq.m	14.9sq.m
Agg. Bedroom Area	24.4sq.m	29.8sq.m
Agg. Storage	6sq.m	7.1sq.m
Private Open Space	7sq.m	7.43sq.m
Dual Aspect		YES
Floor area 10% greater than minimum floor area?		NO

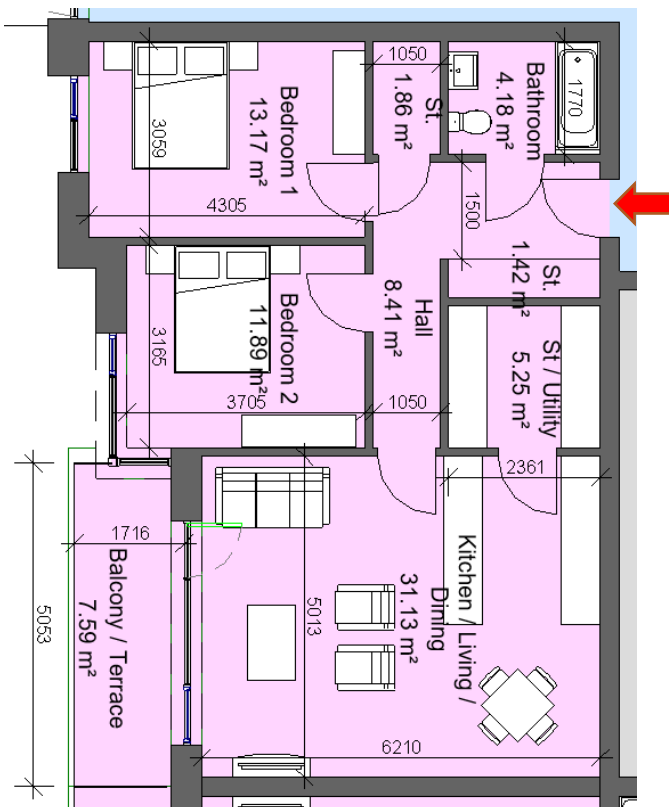


Sector 6a & 6b		
Block 1, Apartment 11, 22, 34, 46, 58		
3 Bed 5 Person		
Total Area	Min. req. area	Proposed
Total Apartment Area	90sq.m	112.9sq.m
Total Kitchen / Living / Dining	34sq.m	35.3sq.m
Bedroom 1	13sq.m	13.8sq.m
Bedroom 2	11.4sq.m	11.7sq.m
	7.1sq.m	8.3sq.m
Agg. Bedroom Area	31.5sq.m	33.8sq.m
Agg. Storage	9sq.m	12.9sq.m
Private Open Space	9sq.m	9.38sq.m
Dual Aspect		YES
Floor area 10% greater than min floor area		YES

\*Some units are mirrored / handed  
 \*Refer to Housing Quality Statement for individual apartment floor area calculations



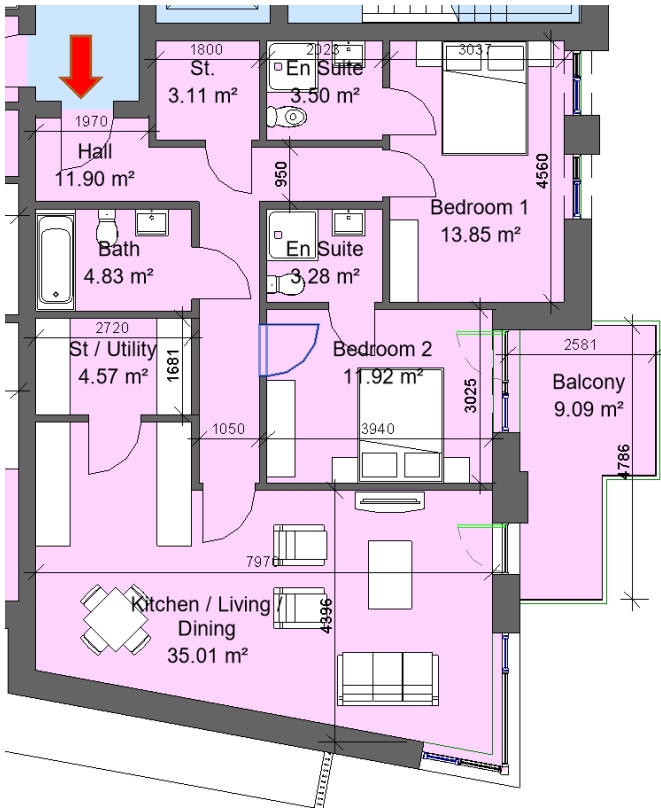
Sector 6a & 6b		
Block 2, Apartment 1, 7, 8, 15, 16, 22, 24, 31, 32, 39		
2 Bed 4 Person		
Total Area	Min. req. area	Proposed
Total Apartment Area	73sq.m	82.1sq.m
Total Kitchen / Living / Dining	30sq.m	30sq.m
Bedroom 1	13sq.m	13sq.m
Bedroom 2	11.4sq.m	12.5sq.m
Agg. Bedroom Area	24.4sq.m	25.5sq.m
Agg. Storage	6sq.m	6.8sq.m
Private Open Space	7sq.m	12.1sq.m
Dual Aspect		YES
Floor area 10% greater than min floor area		YES



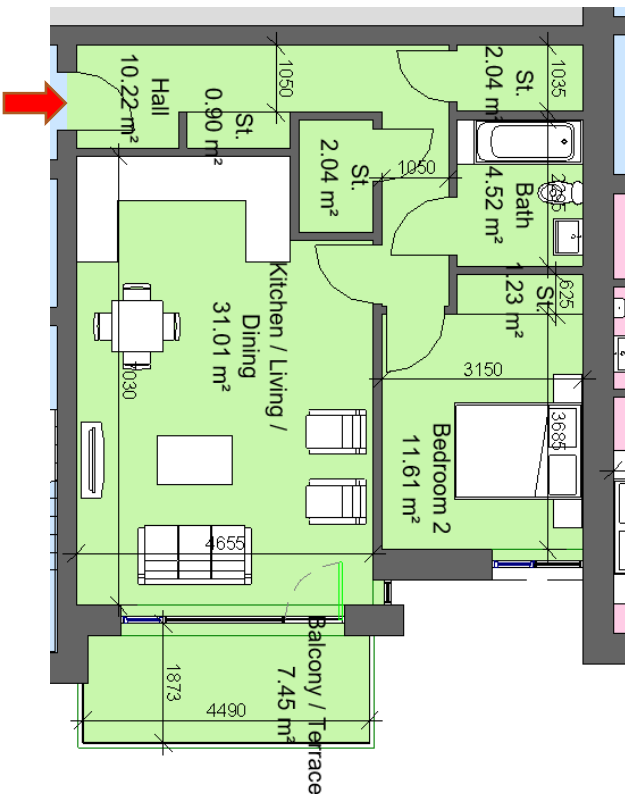
Sector 6a & 6b		
Block 2, Apartment 3, 5, 11, 13, 19, 21, 27, 29, 35, 37		
2 Bed 4 Person		
Total Area	Min. req. area	Proposed
Total Apartment Area	73sq.m	80.6sq.m
Total Kitchen / Living / Dining	30sq.m	31.1sq.m
Bedroom 1	13sq.m	13.2sq.m
Bedroom 2	11.4sq.m	11.9sq.m
Agg. Bedroom Area	24.4sq.m	25.1sq.m
Agg. Storage	6sq.m	8.53sq.m
Private Open Space	7sq.m	7.59sq.m
Dual Aspect		NO
Floor area 10% greater than min floor area		YES

\*Some units are mirrored / handed  
 \*Refer to Housing Quality Statement for individual apartment floor area calculations





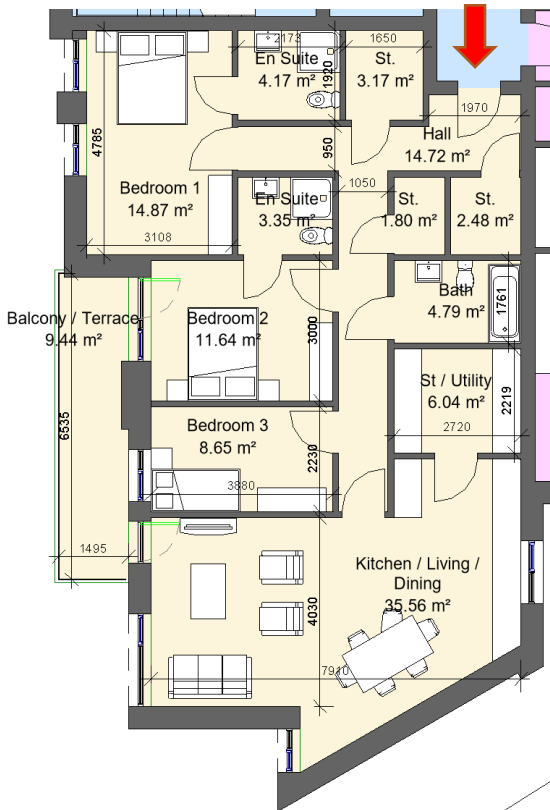
Sector 6a & 6b		
Block 3, Apartment 11, 23, 35, 47, 59		
2 Bed 4 Person		
Total Area	Min. req. area	Proposed
Total Apartment Area	73sq.m	96.3sq.m
Total Kitchen / Living / Dining	30sq.m	35sq.m
Bedroom 1	13sq.m	13.8sq.m
Bedroom 2	11.4sq.m	11.9sq.m
Agg. Bedroom Area	24.4sq.m	25.7sq.m
Agg. Storage	6sq.m	7.68sq.m
Private Open Space	7sq.m	9.1sq.m
Dual Aspect		NO
Floor area 10% greater than min floor area		YES



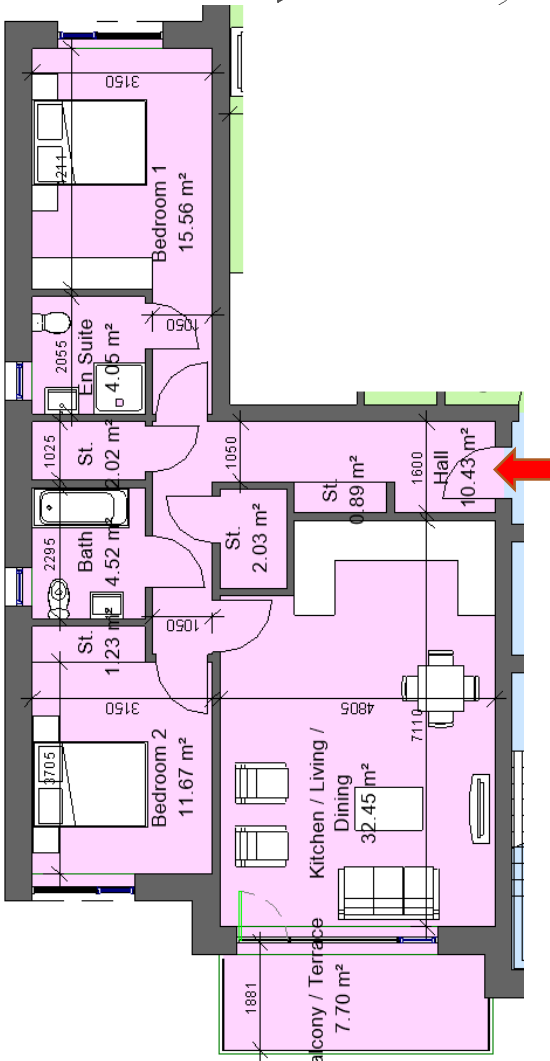
Sector 6a & 6b		
Block 3, Apartment 5		
1 Bed 2 Person		
Total Area	Min. req. area	Proposed
Total Apartment Area	45sq.m	66.7sq.m
Total Kitchen / Living / Dining	23sq.m	31sq.m
Bedroom 1	11.4sq.m	11.6sq.m
Agg. Storage	3sq.m	6.2sq.m
Private Open Space	5sq.m	7.45sq.m
Dual Aspect		NO
Floor area 10% greater than min. floor area?		YES

\*Some units are mirrored / handed  
 \*Refer to Housing Quality Statement for individual apartment floor area calculations



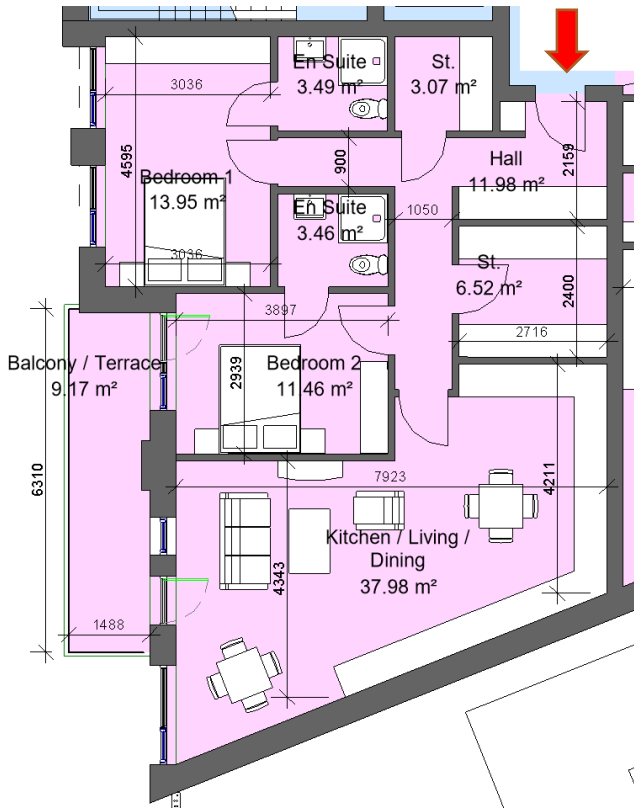


Sector 6a & 6b		
Block 4, Apartment 6, 14, 22, 30, 38, 46		
3 Bed 5 Person		
Total Area	Min. req. area	Proposed
Total Apartment Area	90sq.m	118.2sq.m
Total Kitchen / Living / Dining	34sq.m	35.5sq.m
Bedroom 1	13sq.m	14.9sq.m
Bedroom 2	11.4sq.m	11.7sq.m
	7.1sq.m	8.6sq.m
Agg. Bedroom Area	31.5sq.m	35.2sq.m
Agg. Storage	9sq.m	13.5sq.m
Private Open Space	9sq.m	9.44sq.m
Dual Aspect		YES
Floor area 10% greater than min floor area		YES

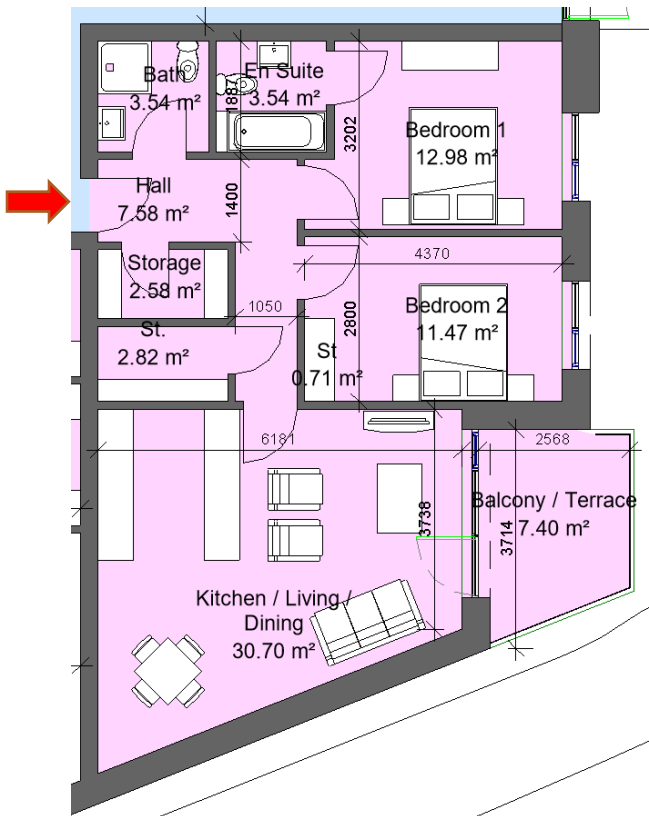


Sector 6a & 6b		
Block 4, Apartment 1, 8, 16, 24, 32, 40, Block 5, Apartment 1, 8, 16, 24, 32,		
2 Bed 4 Person		
Total Area	Min. req. area	Proposed
Total Apartment Area	73sq.m	88.9sq.m
Total Kitchen / Living / Dining	30sq.m	32.4sq.m
Bedroom 1	13sq.m	15.5sq.m
Bedroom 2	11.4sq.m	11.7sq.m
Agg. Bedroom Area	24.4sq.m	27.3sq.m
Agg. Storage	6sq.m	6.2sq.m
Private Open Space	7sq.m	7.7sq.m
Dual Aspect		YES
Floor area 10% greater than min floor area		YES

\*Some units are mirrored / handed  
 \*Refer to Housing Quality Statement for individual apartment floor area calculations

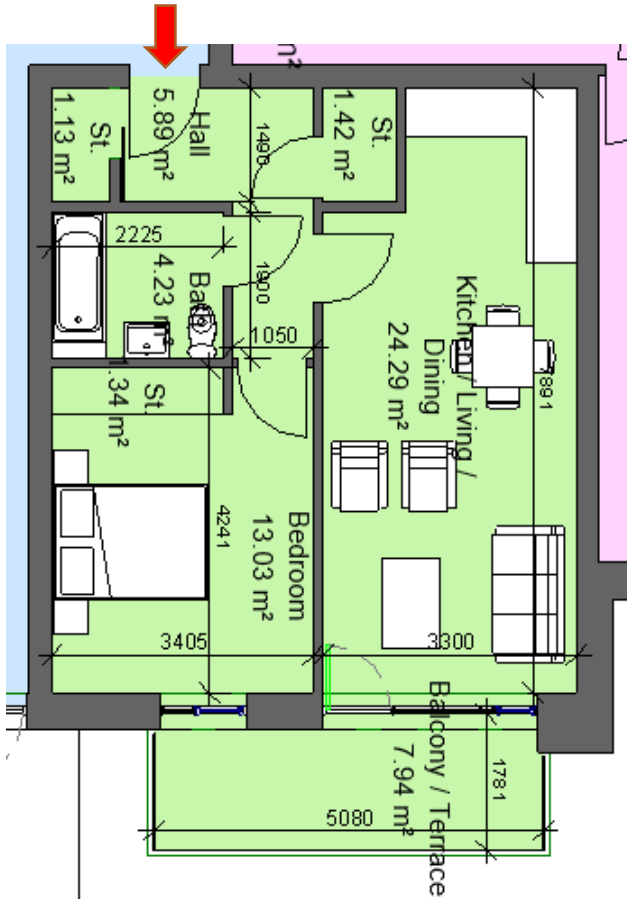


Sector 6a & 6b		
Block 5, Apartment 6, 14, 22, 24, 32, 30, 38		
2 Bed 4 Person		
Total Area	Min. req. area	Proposed
Total Apartment Area	73sq.m	96.9sq.m
Total Kitchen / Living / Dining	30sq.m	38.4sq.m
Bedroom 1	13sq.m	13.9sq.m
Bedroom 2	11.4sq.m	11.4sq.m
Agg. Bedroom Area	24.4sq.m	25.3sq.m
Agg. Storage	6sq.m	9.6 sq.m
Private Open Space	7sq.m	9.17sq.m
Dual Aspect		NO
Floor area 10% greater than min floor area		YES

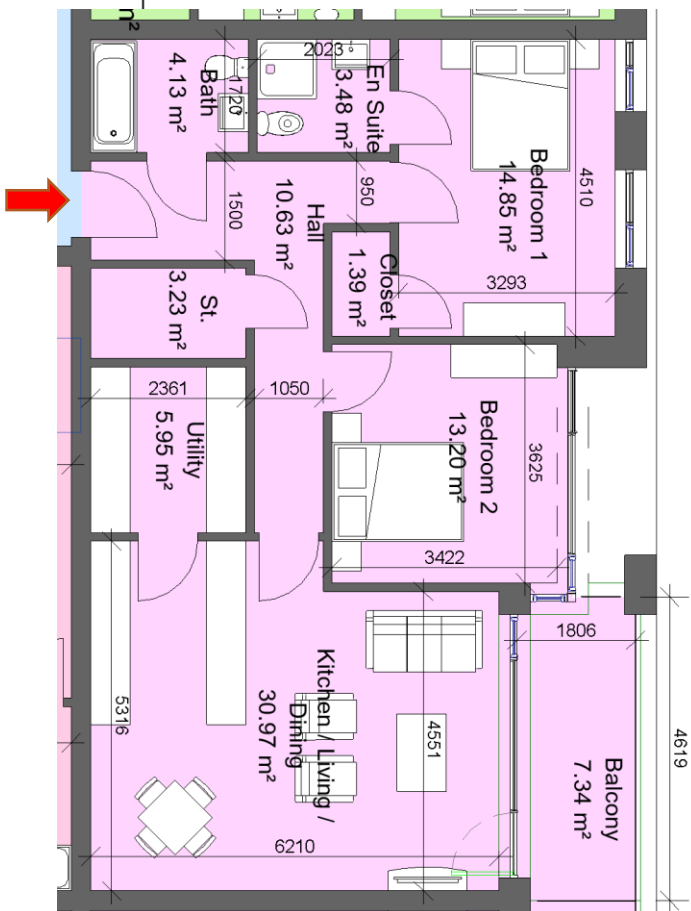


Sector 6a & 6b		
Block 5, Apartment 7, 15, 23, 24, 31, 39,		
2 Bed 4 Person		
Total Area	Min. req. area	Proposed
Total Apartment Area	73sq.m	79.8sq.m
Total Kitchen / Living / Dining	30sq.m	30.7sq.m
Bedroom 1	13sq.m	13sq.m
Bedroom 2	11.4sq.m	11.4sq.m
Agg. Bedroom Area	24.4sq.m	24.4sq.m
Agg. Storage	6sq.m	6.1sq.m
Private Open Space	7sq.m	7.4sq.m
Dual Aspect		NO
Floor area 10% greater than min floor area		NO

\*Some units are mirrored / handed  
 \*Refer to Housing Quality Statement for individual apartment floor area calculations

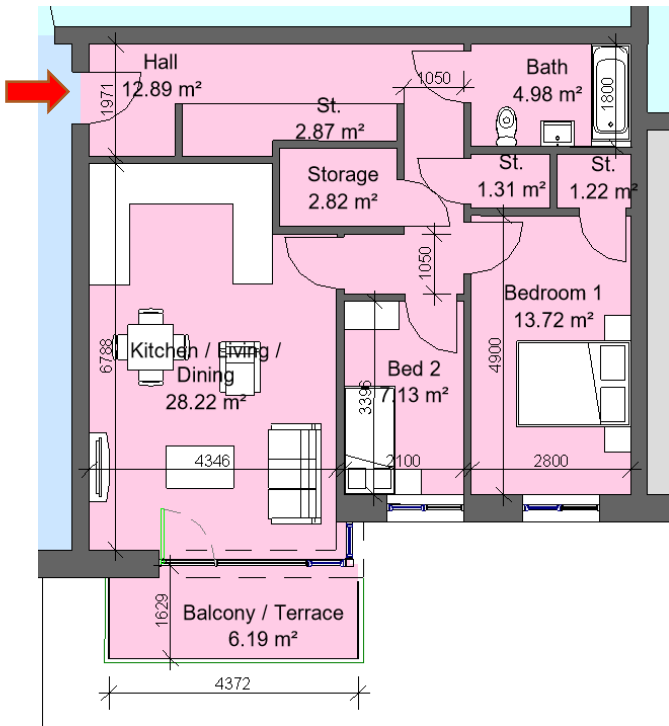


Sector 6a & 6b		
Block 1, Apartment 10		
1 Bed 2 Person		
Total Area	Min. req. area	Proposed
Total Apartment Area	45sq.m	53.9sq.m
Total Kitchen / Living / Dining	23sq.m	24.3sq.m
Bedroom 1	11.4sq.m	13sq.m
Agg. Storage	3sq.m	3.9 sq.m
Private Open Space	5sq.m	7.94sq.m
Dual Aspect		NO
Floor area 10% greater than min. floor area?		YES

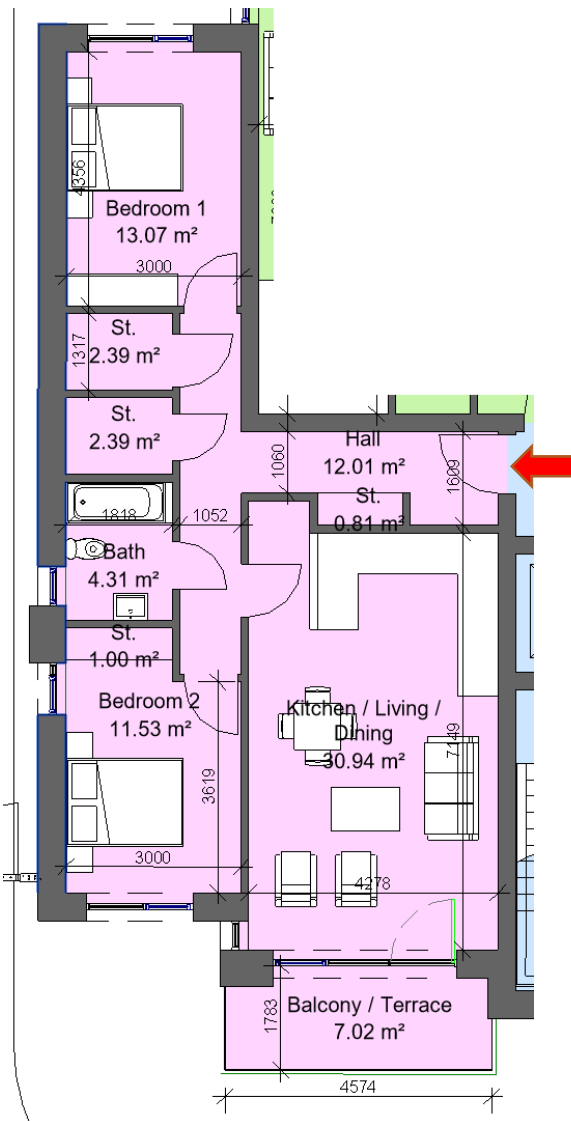


Sector 6a & 6b		
Block 7, Apartment 10, 12, 20, 22, 30, 32, 40, 42		
2 Bed 4 Person		
Total Area	Min. req. area	Proposed
Total Apartment Area	73sq.m	91.7sq.m
Total Kitchen / Living / Dining	30sq.m	30.9sq.m
Bedroom 1	13sq.m	14.8sq.m
Bedroom 2	11.4sq.m	13.2sq.m
Agg. Bedroom Area	24.4sq.m	28sq.m
Agg. Storage	6sq.m	10.6sq.m
Private Open Space	7sq.m	7.34sq.m
Dual Aspect		NO
Floor area 10% greater than min floor area		YES

\*Some units are mirrored / handed  
 \*Refer to Housing Quality Statement for individual apartment floor area calculations

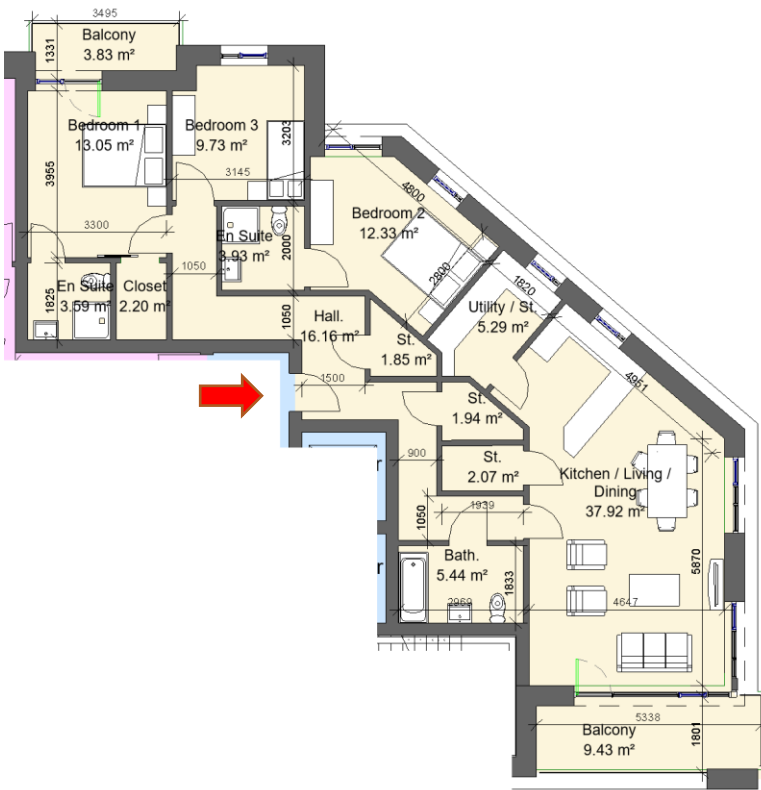


Sector 6a & 6b		
Block 7, Apartment 3, 11, 13, 21, 23, 31, 33, 41, 43		
2 Bed 3 Person		
Total Area	Min. req. area	Proposed
Total Apartment Area	63sq.m	79.4sq.m
Total Kitchen / Living / Dining	28sq.m	30.5sq.m
Bedroom 1	13sq.m	13.7sq.m
Bedroom 2	7.1sq.m	7.1sq.m
Agg. Bedroom Area	20.1sq.m	20.8sq.m
Agg. Storage	5sq.m	6.7sq.m
Private Open Space	6sq.m	6.19sq.m
Dual Aspect		NO
Floor area 10% greater than min. floor area		YES

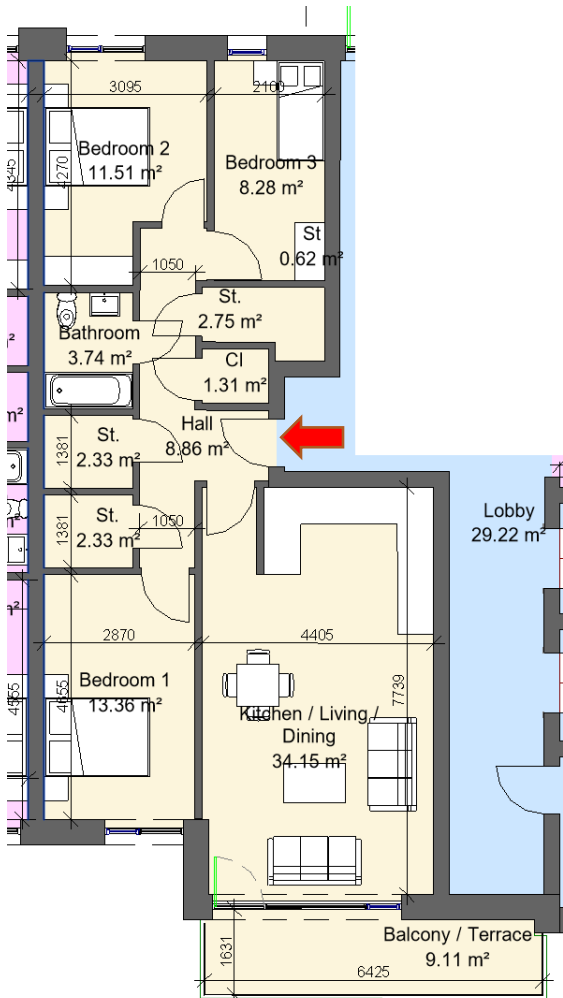


Sector 6a & 6b		
Block 7, Apartment 1, 5, 8, 15, 16, 18, 25, 26, 28, 35, 36, 39, 45, 46, 48		
2 Bed 4 Person		
Total Area	Min. req. area	Proposed
Total Apartment Area	73sq.m	82.3 sq.m
Total Kitchen / Living / Dining	30sq.m	30.9sq.m
Bedroom 1	13sq.m	13sq.m
Bedroom 2	11.4sq.m	11.5sq.m
Agg. Bedroom Area	24.4sq.m	24.8sq.m
Agg. Storage	6sq.m	6.6sq.m
Private Open Space	7sq.m	7.02sq.m
Dual Aspect		YES
Floor area 10% greater than min floor area		YES

\*Some units are mirrored / handed  
 \*Refer to Housing Quality Statement for individual apartment floor area calculations

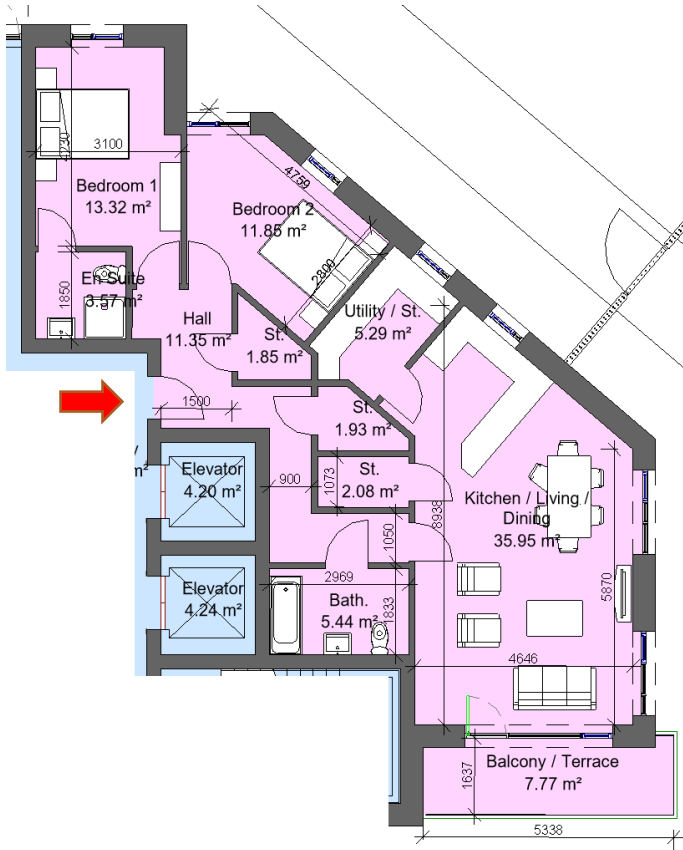


Sector 6a & 6b		
Block 7, Apartment 17, 27, 37, 47, 49		
3 Bed 5 Person		
Total Area	Min. req. area	Proposed
Total Apartment Area	90sq.m	120.9sq.m
Total Kitchen / Living / Dining	34sq.m	37.9sq.m
Bedroom 1	13sq.m	13sq.m
Bedroom 2	11.4sq.m	12.3sq.m
	7.1sq.m	9.7sq.m
Agg. Bedroom Area	31.5sq.m	35sq.m
Agg. Storage	9sq.m	13.3sq.m
Private Open Space	9sq.m	13.3sq.m
Dual Aspect		YES
Floor area 10% greater than min floor area		YES

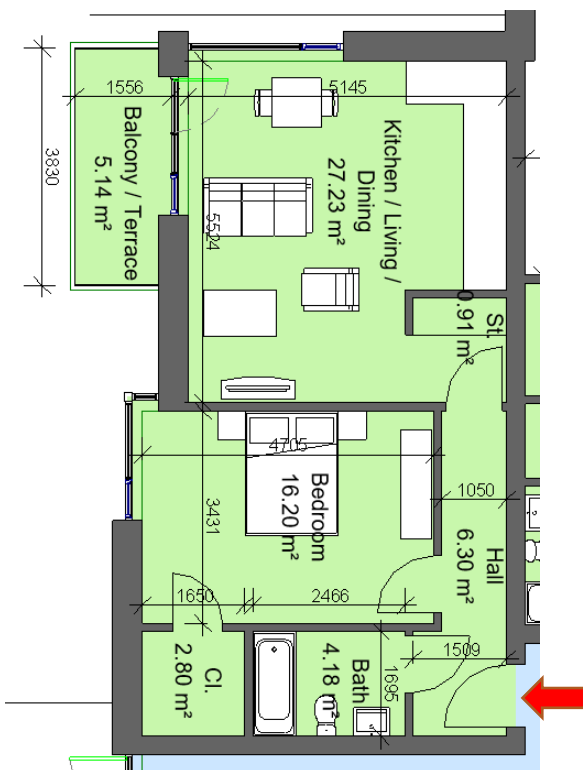


Sector 6a & 6b		
Block 7, Apartment 6		
3 Bed 5 Person		
Total Area	Min. req. area	Proposed
Total Apartment Area	90sq.m	93.5sq.m
Total Kitchen / Living / Dining	34sq.m	34.1sq.m
Bedroom 1	13sq.m	13.3sq.m
Bedroom 2	11.4sq.m	11.5sq.m
	7.1sq.m	8.3sq.m
Agg. Bedroom Area	31.5sq.m	33.1sq.m
Agg. Storage	9sq.m	9.3sq.m
Private Open Space	9sq.m	9.11sq.m
Dual Aspect		YES
Floor area 10% greater than min floor area		NO

\*Some units are mirrored / handed  
 \*Refer to Housing Quality Statement for individual apartment floor area calculations

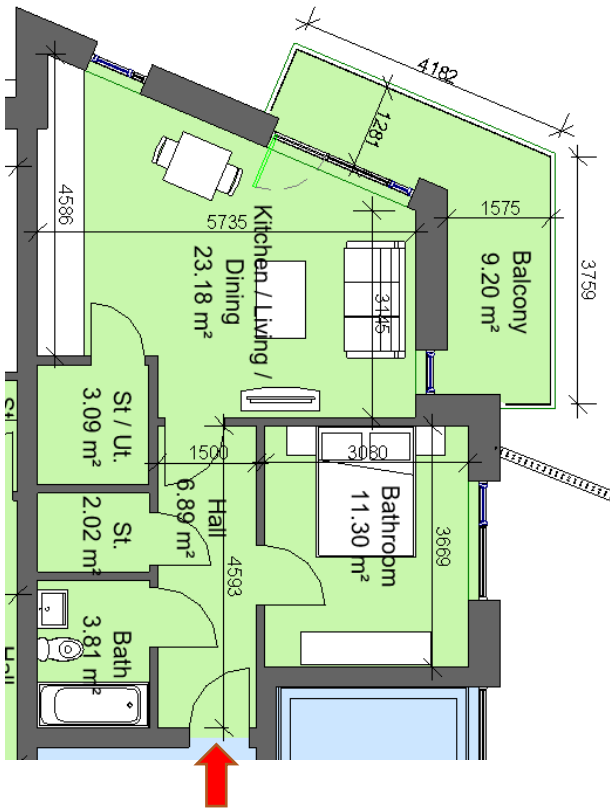


Sector 6a & 6b		
Block 7, Apartment 7		
2 Bed 4 Person		
Total Area	Min. req. area	Proposed
Total Apartment Area	73sq.m	97.6sq.m
Total Kitchen / Living / Dining	30sq.m	35.9sq.m
Bedroom 1	13sq.m	13.3sq.m
Bedroom 2	11.4sq.m	11.8sq.m
Agg. Bedroom Area	24.4sq.m	25.1Sq.m
Agg. Storage	6sq.m	11.1sq.m
Private Open Space	7sq.m	7.77sq.m
Dual Aspect		YES
Floor area 10% greater than min floor area		YES

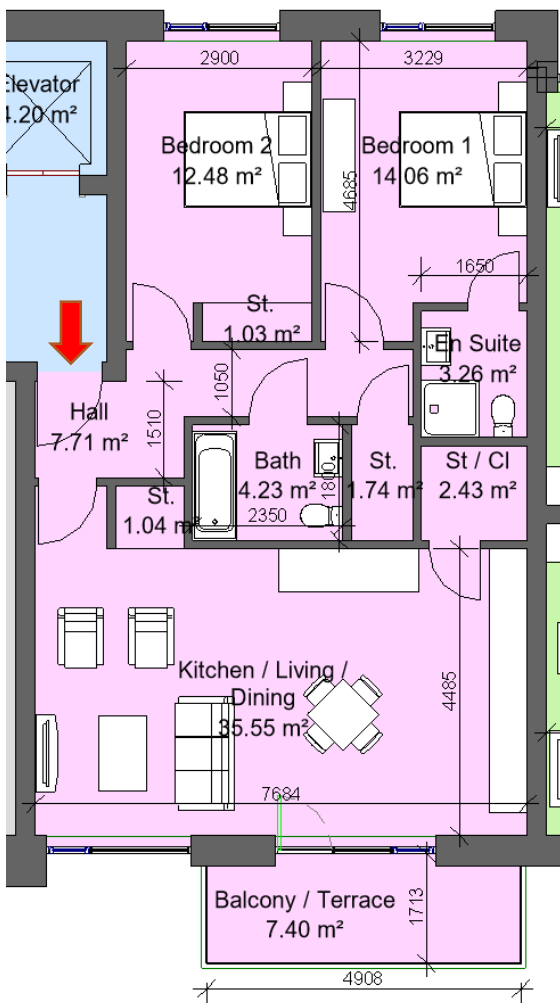


Sector 6a & 6b		
Block 6, Apartment 2, 9, 17, 25, 33		
1 Bed 2 Person		
Total Area	Min. req. area	Proposed
Total Apartment Area	45sq.m	60sq.m
Total Kitchen / Living / Dining	23sq.m	27.2sq.m
Bedroom 1	11.4sq.m	16.2sq.m
Agg. Storage	3sq.m	3.7 sq.m
Private Open Space	5sq.m	5.14sq.m
Dual Aspect		YES
Floor area 10% greater than min. floor area?		YES

\*Some units are mirrored / handed  
 \*Refer to Housing Quality Statement for individual apartment floor area calculations



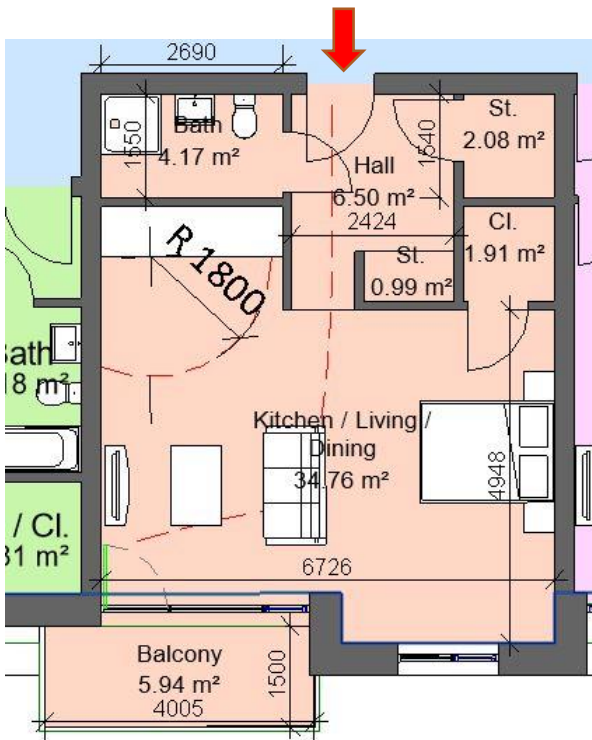
Sector 6a & 6b		
Block 6, Apartment 1, 8, 16, 24, 32		
1 Bed 2 Person		
Total Area	Min. req. area	Proposed
Total Apartment Area	45sq.m	53.4sq.m
Total Kitchen / Living / Dining	23sq.m	23.3 sq.m
Bedroom 1	11.4sq.m	11.8sq.m
Agg. Storage	3sq.m	3.7 sq.m
Private Open Space	5sq.m	9.2sq.m
Dual Aspect		NO
Floor area 10% greater than min. floor area?		YES



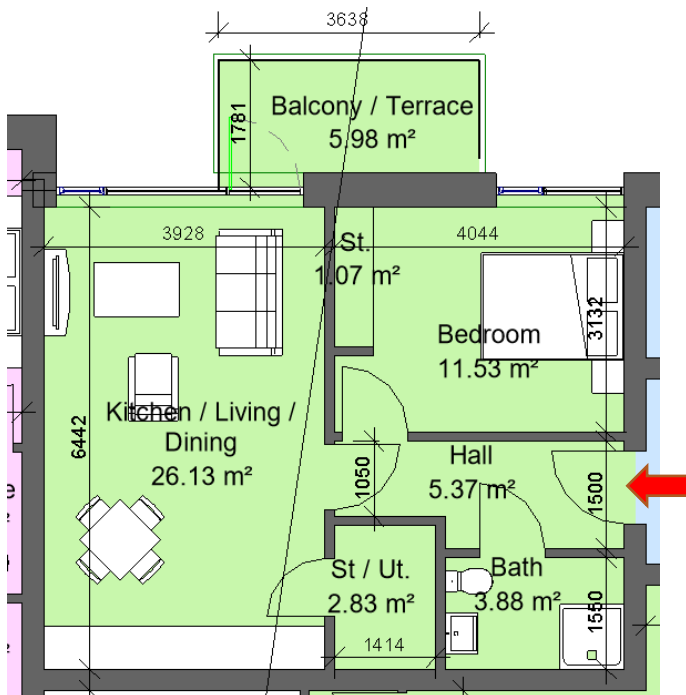
Sector 6a & 6b		
Block 6, Apartment 3, 11, 19, 27, 35		
2 Bed 4 Person		
Total Area	Min. req. area	Proposed
Total Apartment Area	73sq.m	87.9sq.m
Total Kitchen / Living / Dining	30sq.m	35.5sq.m
Bedroom 1	13sq.m	14sq.m
Bedroom 2	11.4sq.m	12.5sq.m
Agg. Bedroom Area	24.4sq.m	26.5Sq.m
Agg. Storage	6sq.m	6.2sq.m
Private Open Space	7sq.m	7.4sq.m
Dual Aspect		YES
Floor area 10% greater than min floor area		YES

\*Some units are mirrored / handed  
 \*Refer to Housing Quality Statement for individual apartment floor area calculations



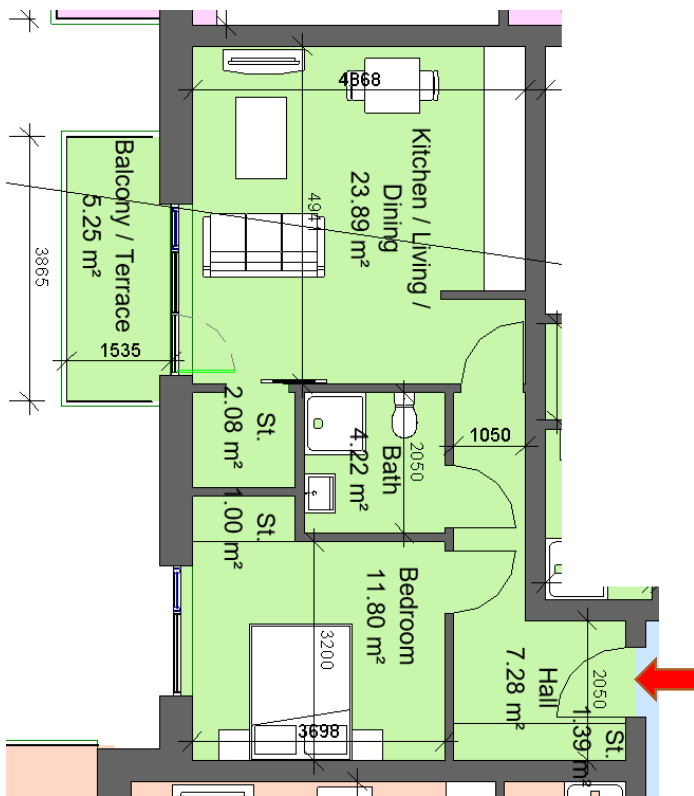


Sector 6a & 6b		
Block 6, Apartment 10, 18, 26, 34		
Studio Apartment		
Total Area	Min. req. area	Proposed
Total Apartment Area	37sq.m	53.4sq.m
Total Kitchen / Living / Dining/ Bedroom	30sq.m	34.7 sq.m
Agg. Storage	3sq.m	4 sq.m
Private Open Space	4sq.m	5.9sq.m
Dual Aspect		NO
Floor area 10% greater than min. floor area?		YES

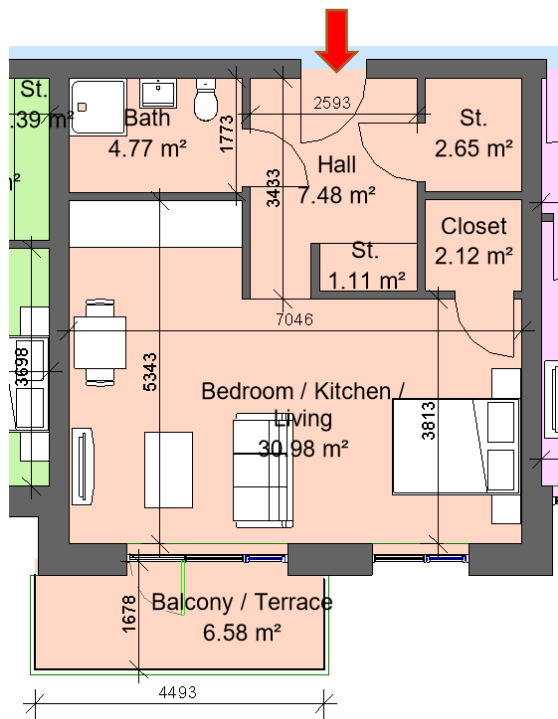


Sector 6a & 6b		
Block 6, Apartment 4, 12, 20, 28, 36		
1 Bed 2 Person		
Total Area	Min. req. area	Proposed
Total Apartment Area	45sq.m	52.1sq.m
Total Kitchen / Living / Dining	23sq.m	25.3 sq.m
Bedroom 1	11.4sq.m	11.4sq.m
Agg. Storage	3sq.m	4 sq.m
Private Open Space	5sq.m	5.98sq.m
Dual Aspect		NO
Floor area 10% greater than min. floor area?		YES

\*Some units are mirrored / handed  
 \*Refer to Housing Quality Statement for individual apartment floor area calculations

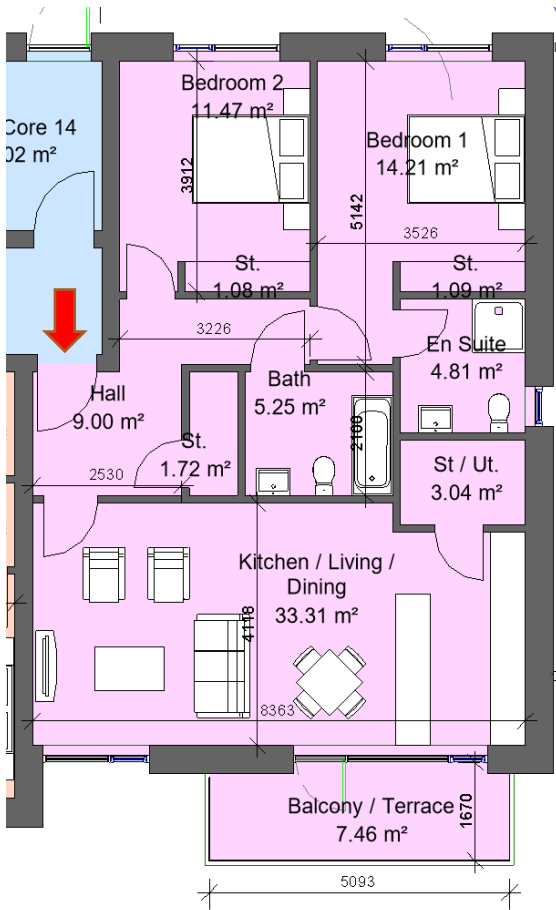


Sector 6a & 6b		
Block 6, Apartment 5, 13, 21, 29, 37		
1 Bed 2 Person		
Total Area	Min. req. area	Proposed
Total Apartment Area	45sq.m	53.6sq.m
Total Kitchen / Living / Dining	23sq.m	23.1 sq.m
Bedroom 1	11.4sq.m	11.9sq.m
Agg. Storage	3sq.m	3.9 sq.m
Private Open Space	5sq.m	5.25sq.m
Dual Aspect		NO
Floor area 10% greater than min. floor area?		YES

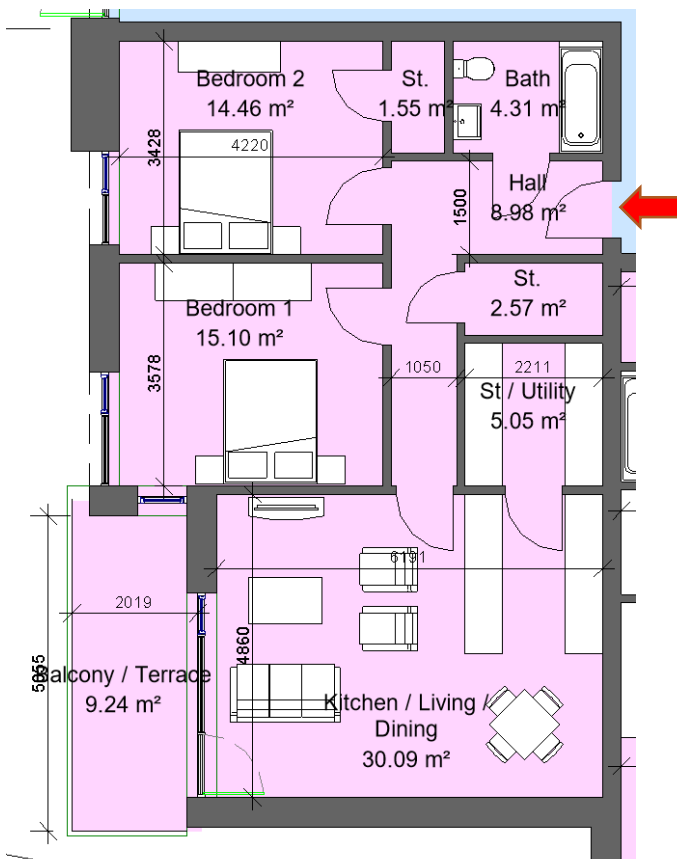


Sector 6a & 6b		
Block 6, Apartment 6, 14, 22, 30, 38		
Studio Apartment		
Total Area	Min. req. area	Proposed
Total Apartment Area	37sq.m	49.2 sq.m
Total Kitchen / Living / Dining/ Bedroom	30sq.m	30.1 sq.m
Agg. Storage	3sq.m	3.7 sq.m
Private Open Space	4sq.m	6.58sq.m
Dual Aspect		NO
Floor area 10% greater than min. floor area?		YES

\*Some units are mirrored / handed  
 \*Refer to Housing Quality Statement for individual apartment floor area calculations



Sector 6a & 6b		
Block 6, Apartment 7, 15, 23, 31, 39		
2 Bed 4 Person		
Total Area	Min. req. area	Proposed
Total Apartment Area	73sq.m	90.9sq.m
Total Kitchen / Living / Dining	30sq.m	34sq.m
Bedroom 1	13sq.m	15.2sq.m
Bedroom 2	11.4sq.m	13.1sq.m
Agg. Bedroom Area	24.4sq.m	28.3sq.m
Agg. Storage	6sq.m	6.3sq.m
Private Open Space	7sq.m	7.46sq.m
Dual Aspect		YES
Floor area 10% greater than min floor area		YES



Sector 6a & 6b		
Block 3, Apartment 10		
2 Bed 4 Person		
Total Area	Min. req. area	Proposed
Total Apartment Area	73sq.m	86.12sq.m
Total Kitchen / Living / Dining	30sq.m	30.1sq.m
Bedroom 1	13sq.m	15.1sq.m
Bedroom 2	11.4sq.m	14.46sq.m
Agg. Bedroom Area	24.4sq.m	29.56sq.m
Agg. Storage	6sq.m	9.17sq.m
Private Open Space	7sq.m	9.24sq.m
Dual Aspect		YES
Floor area 10% greater than minimum floor area?		YES

\*Some units are mirrored / handed  
 \*Refer to Housing Quality Statement for individual apartment floor area calculations